

Metal Beam Crash Barriers

# CREATING BENCHMARKS





## About Us

**JINDAL (INDIA) LIMITED** – Setting Benchmarks Since 1952

Jindal (India) Limited, When we claim to be part of growth story of Indian Steel Industry from beginning, we claim it with a solid foundation of over 67 years of presence in this line.

When we claim to be a renowned producer of Galvanized steel sheets, corrugated sheets and coils, it is after having the trust of customers all across the globe – right from Latin America to Far East.

When we claim to be a significant player in ERW Galvanized and Black pipe segments, it is with a product range from ½ “ to 20” and with the confidence of serving most critical oil and gas Industry through supplies of pipes up to Grade API X 70 successfully over the last few years.

When we claim to be amongst the pioneers in Aluminium foil Industry in India, it is with the backing of being only manufacturer to produce foil in 6 micron thickness (soon going to be the only manufacturer in the country with line to produce 4 micron thickness foil).

When we decided to go for production of Alu Zinc alloy and Color coated steel, we selected the best machinery available, best RM sources for our Substrate material and paint. This has resulted in one year of trouble free operations which has helped us establish our product as a premium quality product in Indian markets and now we are expanding our base to International markets too.

## Towards Future

Embracing the rapid growth of the country infrastructure and urban development, JIL came into the field of structures and pole to serve the increasing demand for superior quality Structures, Poles and Road Safety Equipments. As one of the leading manufacturers, JIL has evolved to be synonymous with quality through its comprehensive range of products for various applications. Its range of solutions includes Street Lighting Poles, Traffic Poles, CCTV Poles, Flood Lighting Poles and Stadium Masts, Swaged Tubular Pole, Railway Structures, Metal Beam Crash Barriers and many more...





## Mission

Creating new benchmarks through creating new product portfolio to enhance support towards infrastructural growth and thus involved in nation building.

## Vision

Our vision is to become market leaders in Road Safety Equipments business through strong focus on customer relationships along with quality and cost consciousness; and a concern for environment and safety both in domestic and global markets.

## Product range

Metal Beam Crash Barrier

- W-Beam
- Thrie Beam
- Post, Spacer

Anchoring Systems

- End Terminal
- End shoes
- Fish Tail (Available in all Indian & International Standard.)



## W Beam Crash Barrier



Jindal offering **W Beam** Conforming of all standards & specifications prevailing in the Road infrastructure segment.

"Jindal" make W beam (w profiled) single side single beam of 3 mm section is having width of 312 mm and depth of corrugation as 83 mm, hot dip galvanised of zinc coating@ 550 g/sqm, total length 4.318 M with 318 mm overlap (effective length 4M) as per MORTH specification.

The Post channel section of 150mm x 75mm x 5mm thick x 1500/1800/2000 mm long. Hot dip galvanised of zinc coating @ 550g/sqm.

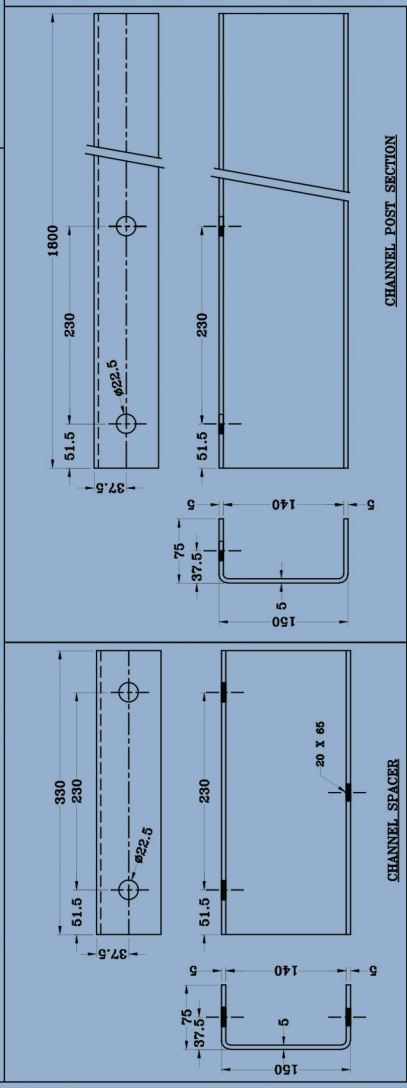
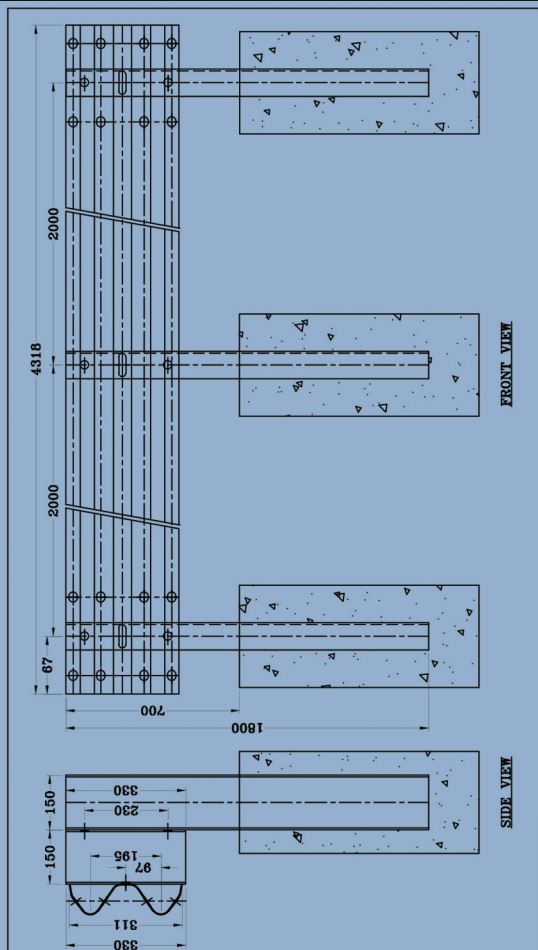
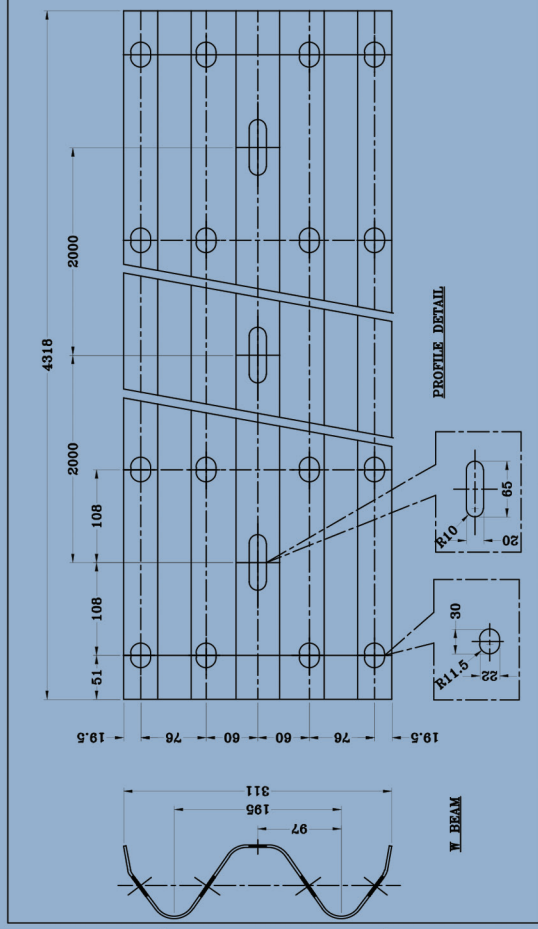
The Spacer channel section of 150mm x 75mm x 5mm thick x 330 mm long. Hot dip galvanised of zinc coating @ 550g/sqm.

Hex bolt of M16:40 with nut bolts and washer

Round bolt of M16:40 with nut bolts and washer



THIS DRAWING IN DESIGN, DETAIL AND CONTENTS IS THE PROPERTY OF JINDAL (INDIA) LTD. AND DEEMED CONFIDENTIAL. ALL RIGHTS OF INVENTION AND DESIGN ARE RESERVED.  
THIS PRINT IS NOT TO BE TRACED OR OTHERWISE REPRODUCED IN WHOLE OR IN PART, WITHOUT WRITTEN PERMISSION OF JINDAL (INDIA) LTD. AND IS RETURNABLE UPON DEMAND.



DRAWING BY		P. SANTRA		MATERIAL:-		QUANTITY:-	
CHECKED BY		D. Kumar		TITLE:-		ASSEMBLY & DETAIL OF "W" BEAM SECTION	
APPROVED BY		V. S. YADAV		DATE		19/09/2018	
REVISION		SIGN		DATE		All Dimension are in M.M.	
No.		REVISION		DATE		SCALE	
1.						1:10	
2.						DRG.NO:-	
3.						JIL/RHP/W-BEAM/001/7	
4.						SHEET	
5.						A1	





# Thrie Beam Crash Barrier



Jindal offering **Thrie beam** Conforming of all standards & specifications prevailing in the Road infrastructure segment.

Jindal" make Thrie beam (T-profiled) single side single beam of 3 mm section is having width of 510 mm and depth of corrugation as 83 mm, hot dip galvanised of zinc coating@ 550 g/sqm, total length 4.318 M with 318 mm overlap (effective length 4M) as per MORTH specification.

The Post channel section of 150mm x 75mm x 5mm thick x 1500 /1800/2000 mm long. Hot dip galvanised of zinc coating @ 550g/sqm.

The Spacer channel section of 150mm x 75mm x 5mm thick x 546 mm long. Hot dip galvanised of zinc coating @ 550g/sqm.

Hex bolt of M16:40 with nut bolts and washer

Round bolt of M16:40 with nut bolts and washer









# Anchoring Systems



Jindal" make **Anchoring Systems** are as follows

1. L Shaped End Beam
2. Fish tail
3. Bull Nose

Any other customized shaped as suggested by consultant





## Jindal Special Offerings

To avoid unnecessary scratches, accumulation of moisture in the metal body, white rust etc. we have shown our special concern to all our beam related products. This will help supplier and end user easy loading unloading, stacking at their concerned site

### USP

- Robustly constricted from High Quality Raw Materials
- Conforms to National & International Standards
- In-house design, Engineering and Production facilities
- Raw materials from the High reputed Company such as TATA, SAIL
- High Precision Roll forming machines in-house
- Strict Quality Control and Quality Systems (ISO 9001:2015)
- Single Source Responsibility (Design & Engineering, Fabrication, Supply, Installation & Maintenance)

## Jindal Special Offerings

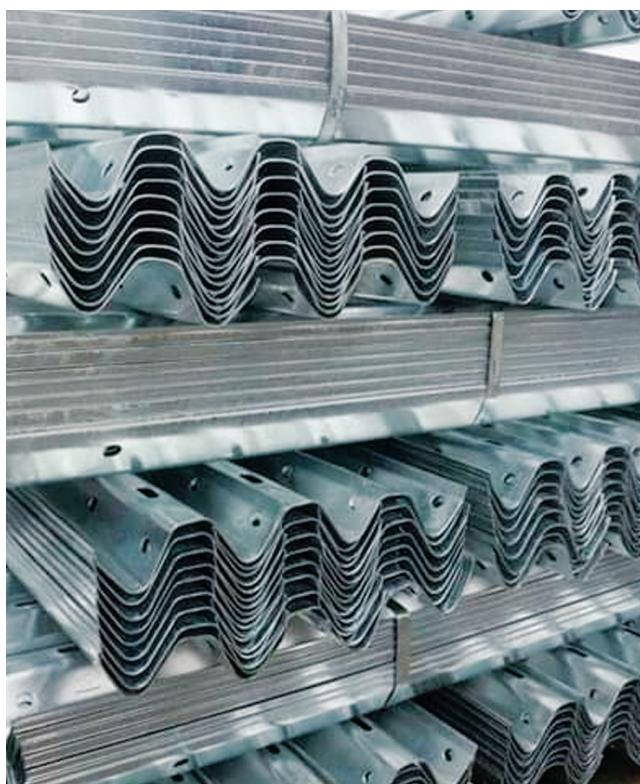


### Special Features

Currently we are equipped with plant & machinery to produce 60,000 MT of Crash Barrier annually.

#### Production Facilities

- 2 nos heavy duty roll forming lines of W profile having capacity of 3,500 tones/month
- 1 no heavy duty roll forming lines of Thrie profile having capacity of 3,500 tones/month
- 3 nos Heavy duty CNC Press Break Machine for making post & space separately.
- Separate dedicated GI plant for metal beam as post & spacer
- Altogether 5000 tones per months production capacity





## Prestigious Projects

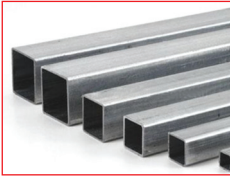


- Villukuri Kanyakumari Road Project- *Larsen & Toubro Limited* Kanyakumari, Tamilnadu -90 km
- Salsabari, Siliguri - *Larsen & Toubro Limited*, West Bengal - 48 km
- BBJRP, - *Larsen & Toubro Limited*, Rajasthan- 62 km
- Purvanchal Expressway Projects, *PNC*-75 km
- Rayalseema Expressway Private Limited *Four Season Care*, Andhra Pradesh -15 km
- Raipur Simga Road Projects *Punj Lioyd*, Chhattisgarh -15 km
- Amarvati, *HG Infra*, Maharashtra -35 km
- Naxalbari Dist Darjeeling, *Dinesh Chandra R Agarwal Infracon Pvt Ltd*, West Bengal -7 km
- Champawat *Shivalya Construction*, Uttarakhand -35 km
- Malda Site *HCC Constrcution Company*, West Bengal -17 km
- Betur Site, Raipur *MKC Infrastructure*, Chhattisgarh - 20 km
- Karpara Project, Valsad , Gujarat- 25 km +
- ADP Road Project, Raipur, *Arcon Infra*, Chhattisgarh -10 km

## Other Products



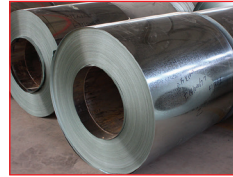
Round Tubes



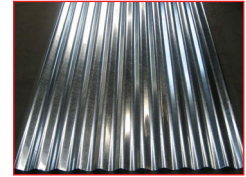
Hollow Sections



API Tubes



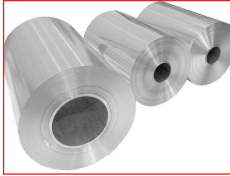
Galvanised Steel Coils



Galvanised Steel Sheets



Colour Sheets



Aluzinc Coated Steel



Colour Coils



Octagonal Poles



Tubular Poles

## Global Presence

We have been regularly exporting various products to nearly 60 countries worldwide.



# JINDAL (INDIA) LIMITED

### Registered Office & Works

NH No. 6, Mouza- Jangalpur, P.O. – Argori, G.P. –  
Andul Dist. Howrah – 711302 West Bengal, India.  
Ph: 033-2669 6319 / 9903121333

### Ranihati Works

NH No. 6, Vill. & Mouza – Pamiara, Kulai,  
P.O. – Biki Hakola, P.S. – Panchala,  
Dist. Howrah – 711322 West Bengal, India.  
Ph: 033-2669 6254/ 1801-1804

### Corporate Office

Plot No. 12, Sector – B1, Local Shopping Complex,  
Vasant Kunj, New Delhi – 110070  
Ph: 011-4072 1500

### Kolkata Office

LMJ Chamber, 2nd Floor, 15C, Hemanta Basu Sarani,  
Kolkata – 700001, West Bengal – India  
Ph: 033-2248 1160

Email - [info@jindalindia.com](mailto:info@jindalindia.com)

[www.jindalindia.com](http://www.jindalindia.com)